

Family and friends starter a

Norooz



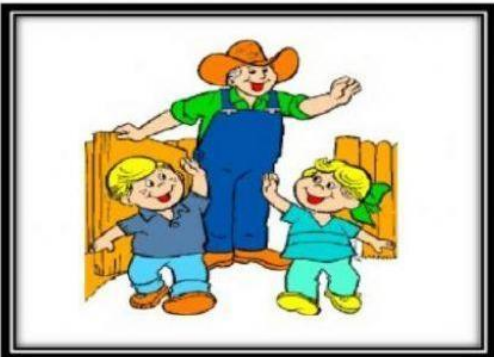
Good Bye



Good Morning



Good Afternoon



Good Night



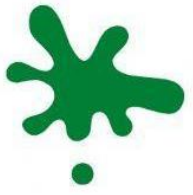
My Name is:

Blank handwriting lines for practice, consisting of a solid top line, a dashed middle line, and a solid bottom line.

Match it.



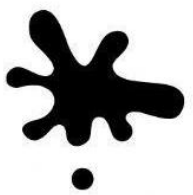
orange



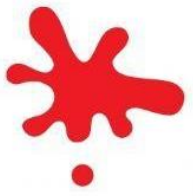
yellow



brown



black



green

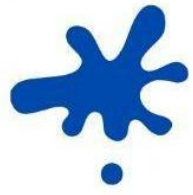
white

gray

blue

pink

red



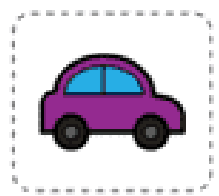
MIXING COLOR

Mix the colors and paste the car inside the correct box.

BLUE + RED =

YELLOW + BLUE =

RED + YELLOW =



Toys

Cut out the toy word and paste it next to the correct toy.













train

doll

kite

robot

puzzle

ball

TOYS WORD SEARCH



Find the toy words -



FAMILY



Match the word to the picture:



mother



brother



father



sister



baby

grandfather



grandmother

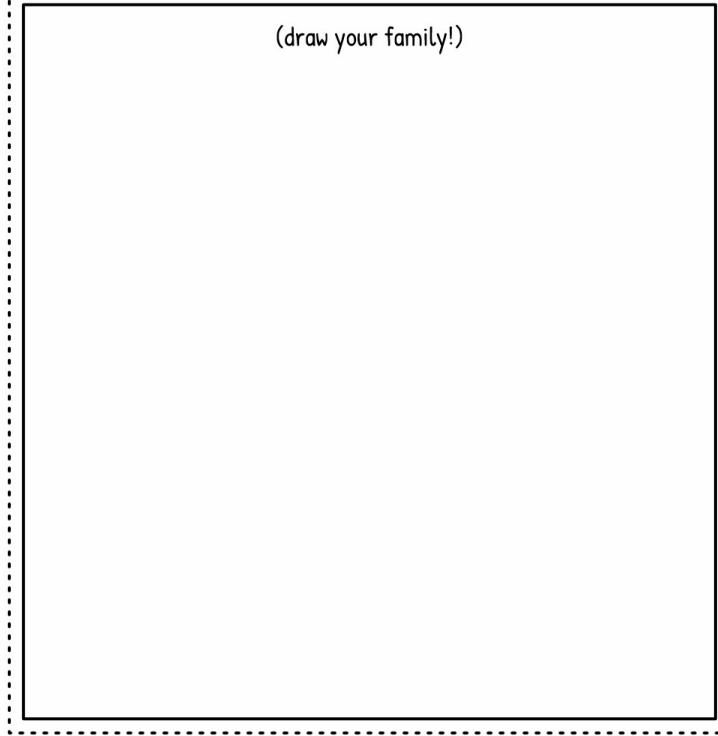


Name _____

Date _____

This is My Family!

(draw your family!)



How many people are in your family?

Can you write the name of the people in your family?



WHAT'S THIS?

1) Choose the correct word.



window door bag bookcase



bookcase bag window door

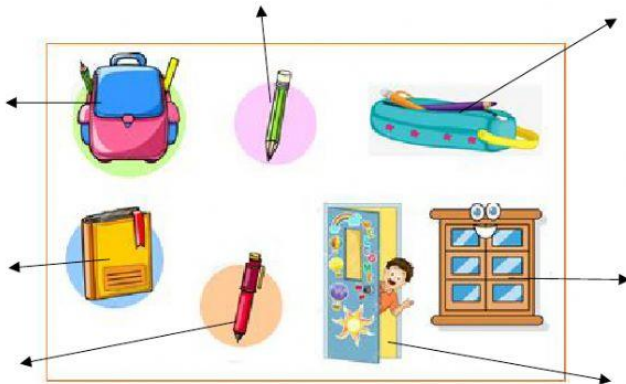


door window bag bookcase



bag bookcase window door

2) Write the words.



What color is it?

Name: _____ Class _____ No. _____

Match the word with the image.



• It's red.



• It's orange.



• It's yellow.



• It's green.



• It's blue.



• It's purple.

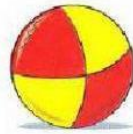


• It's pink.

1) Look and write the correct toy



Is it a car ?



Is it a _____ ?



Is it a _____ ?



Is it a _____ ?



Is it a _____ ?

2) Read and click YES, IT IS / NO, IT ISN'T



Is it a **doll**?

Yes, it is

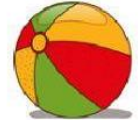
No, it isn't



Is it a **teddy**?

Yes, it is

No, it isn't



Is it a **car**?

Yes, it is

No, it isn't



Is it a **puzzle**?

Yes, it is

No, it isn't



Is it a **teddy**?

Yes, it is

No, it isn't

Yes / No Question

Is it a car?

Yes, it is. / No, it isn't.



Is it a dog?

Yes, it is. / No, it isn't.



Are they starfish?

Yes, they are. / No, they aren't.



Are they strawberries?

Yes, they are. / No, they aren't.



Is it an apple?

Yes, it is. / No, it isn't.



Is it a boat?

Yes, it is. / No, it isn't.



Is it number fifty?

Yes, it is. / No, it isn't.



Are they seahorses?

Yes, they are. / No, they aren't.



Is it a school?

Yes, it is. / No, it isn't.



Are they books?

Yes, they are. / No, they aren't.

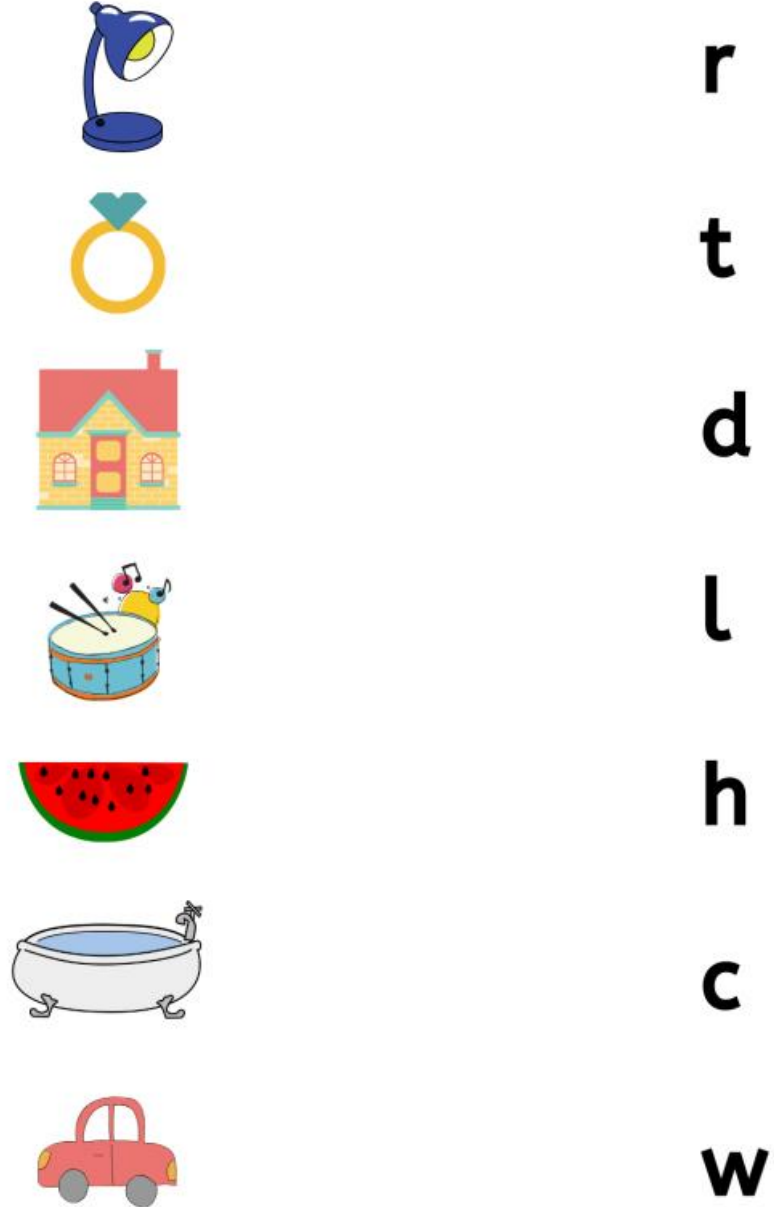


Match the uppercase letter with its lowercase letter.



d
m
b
e
c
k
a
o
g
l
i

Say the name of the picture and draw a line to the correct beginning sound.



Match the lower case to the upper case letter.

E	f	e	n
F	e	m	f
G	g	r	s
H	n	h	a

Alphabet

Drag the letter :

I - J - K



ing



acket



nk

Match :

K

j

I

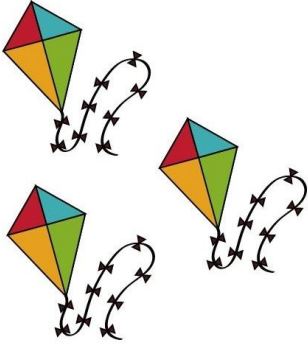
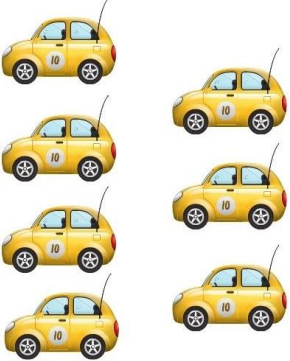

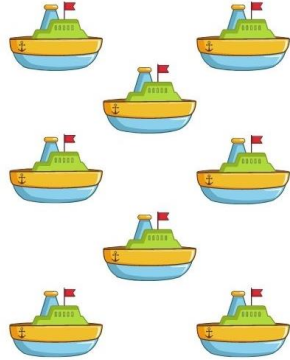
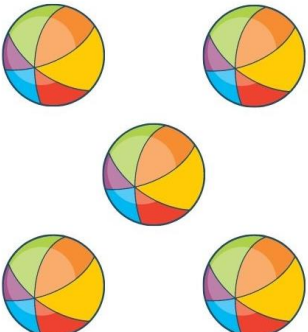
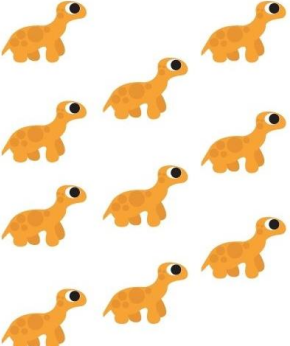
k

J

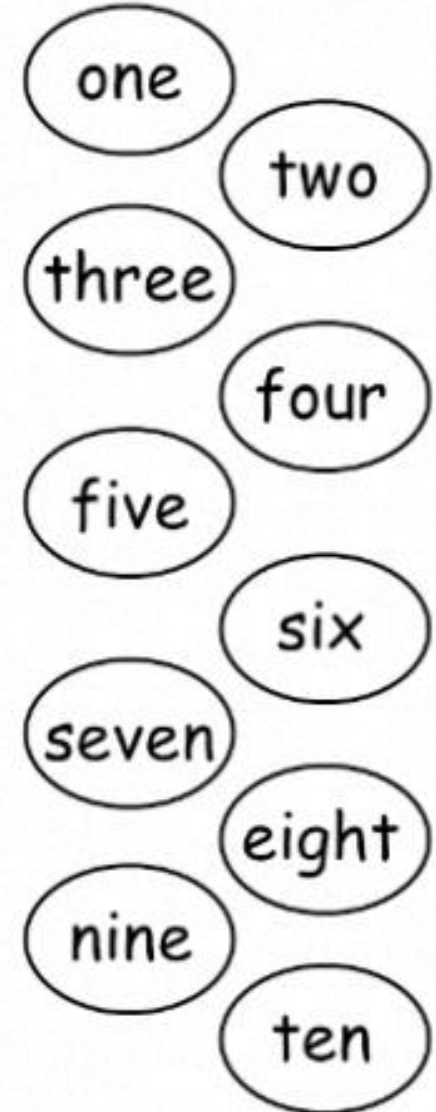
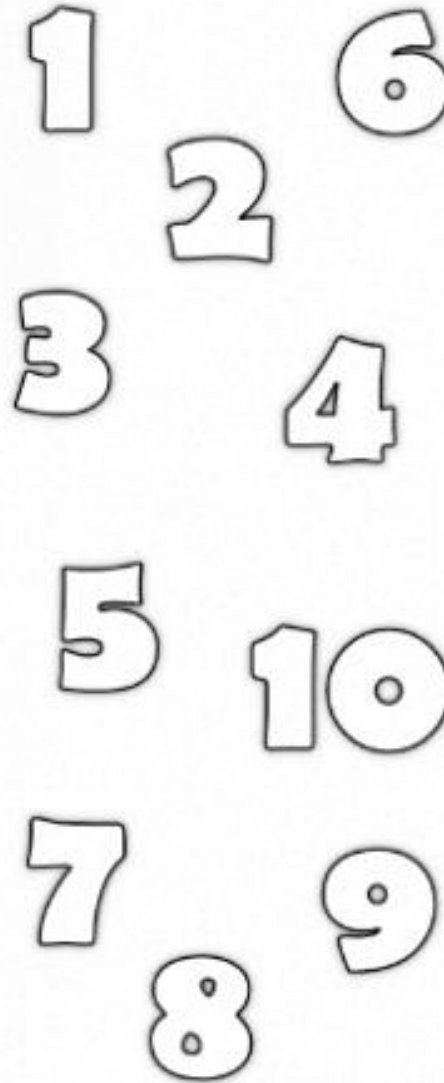
i

Count and Color

Count the objects and color the correct number.

	<p>3</p>		<p>6</p>
	<p>4</p>		<p>7</p>
	<p>5</p>		<p>8</p>
	<p>4</p>		<p>7</p>
	<p>5</p>		<p>8</p>
	<p>6</p>		<p>9</p>
	<p>5</p>		<p>8</p>
	<p>6</p>		<p>9</p>
	<p>7</p>		<p>10</p>

Decorate the numbers and match.



ALPHABET WORKSHEETS

Fill the missing letters and color it.

